



INSTRUCTIONS FOR CONTINUED AIRWORTHINESS

CESSNA 172 GROSS WEIGHT INCREASE STC SA2196CE

DOCUMENT: 17205GWI-ICA-1-REV0

DATE: 6/2/2006

Air Plains Services Corporation
439 North West Road
Wellington, KS 67152

Phone: (800) 752-8481 / (620) 326-8904
FAX: (620) 326-5346

STC # SA2196CE



Don Withers, ACE-119W

* APPROVAL FOR LIMITATIONS ONLY

RECORD OF REVISIONS

REVISION	PAGES	DESCRIPTION	DATE	APPROVED
-	ALL	Initial Release	6/2/06	

AIR
 PLAINS
 17205GWI-ICA-1-Rev0
 6/2/06
 APPROVED

Table of Contents

INTRODUCTION 4
PURPOSE 4
REFERENCE DOCUMENTS 4
MODIFICATION DESCRIPTION 4
INSPECTION INSTRUCTIONS 5
INSPECTION PROCEDURES 5
MAINTENANCE INSTRUCTIONS 5
SCHEDULED MAINTENANCE 5
REPAIR PROCEDURES 5
SPECIAL TOOLS AND EQUIPMENT 5
INSTALLATION AND REMOVAL 5
AIRWORTHINESS LIMITATIONS 12

List of Figures

FIGURE 1 - TAILCONE STRINGER INSTALLATION 4
FIGURE 2 - DETAIL VIEW A 7
FIGURE 3 - DETAIL VIEW B 8
FIGURE 4 - DETAIL VIEW C 9
FIGURE 5 - DETAIL VIEW D 10
FIGURE 6 - DETAIL VIEW E 11

INTRODUCTION

PURPOSE

This document provides maintenance information as a result of this Supplemental Type Certificate (STC) modification. This modification obligates the aircraft operator to include this information in the Operator's Aircraft Maintenance Manual and the operator's Aircraft Scheduled maintenance program.

This ICA applies to all aircraft equipped with tailcone longitudinal stringers modified per STC SA2196CE

REFERENCE DOCUMENTS

1722500-1	Installation Instructions
-----------	---------------------------

MODIFICATION DESCRIPTION

This modification consists of the installation of longitudinal stringers in the aft tailcone section on Cessna models 172 D thru 172 K. A center stringer (Cessna PN# 0512060-1) that runs from bulkhead station 108 to bulkhead station 142 is installed in conjunction with two other stringers (Cessna PN# 0512041-4 Right Side, Cessna PN# 0512041-5 Left Side) that run from bulkhead station 180 to bulkhead station 178.

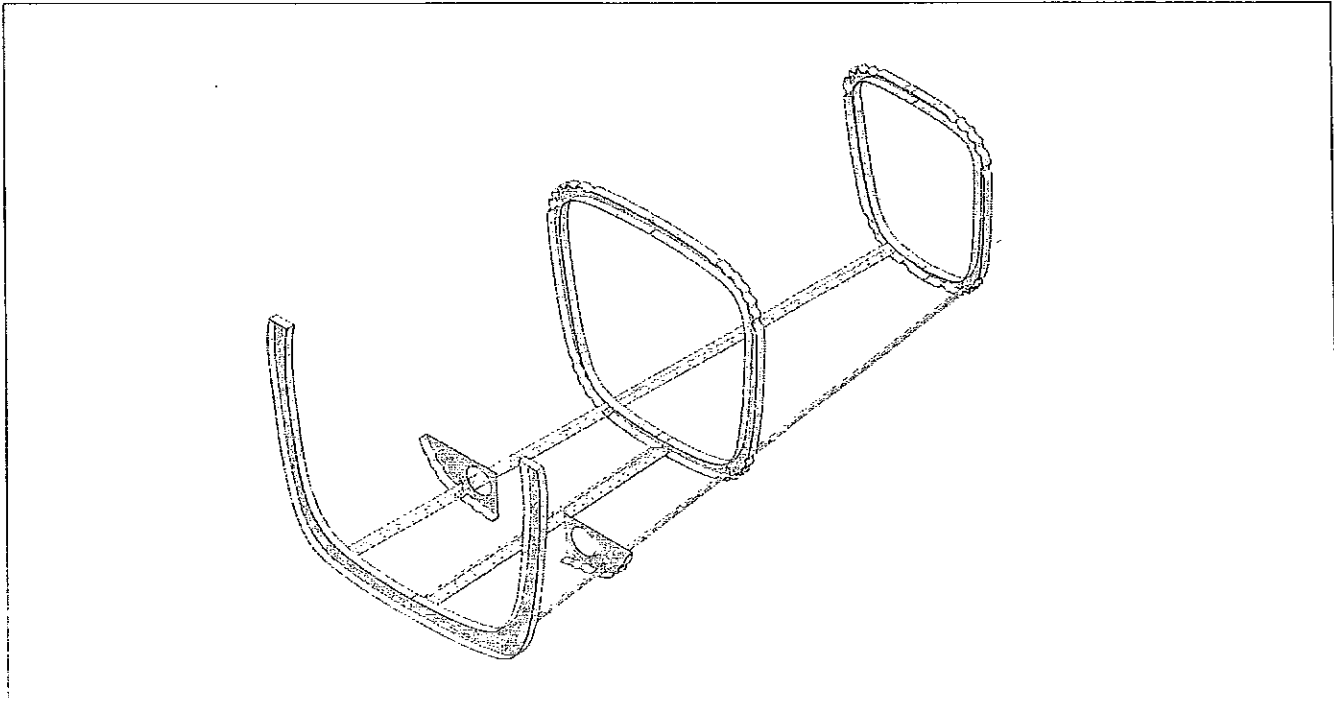


Figure 1 - Tailcone Stringer Installation

INSPECTION INSTRUCTIONS

INSPECTION PROCEDURES

All inspections are surveillance visual inspection. This type of inspection is a close inspection searching for evidence of structural irregularities and discrepancies such as wear, deterioration, damage, corrosion, fatigue, etc..

Please refer to the specific Aircraft Service Manual

MAINTENANCE INSTRUCTIONS

SCHEDULED MAINTENANCE

This aircraft modification does not require scheduled maintenance tasks to be added to the aircraft operators maintenance program.

Repairs are to be performed when deemed necessary as a result of scheduled inspections and as required by the aircraft operator.

REPAIR PROCEDURES

If a discrepancy has been determined, the item must be repaired. The damaged or defective component shall be repaired or replaced in accordance with the aircraft's maintenance manual or the FAA approved data.

SPECIAL TOOLS AND EQUIPMENT

Repair of this modification does not require special tools and equipment other than those specified by the aircraft maintenance manual.

INSTALLATION AND REMOVAL

All the maintenance must be accomplished according to AC 43-13.

Right and left stringer installation.

Part Number 0512041-4; Part Number 0512041-5

1. Open access door to the fuselage aft section.
Remove the rivets placed on both sides of the bulkhead located in the joggle of bulkhead STA 142 and STA 124. Remove the third rivet from center on both sides of bulkhead station 178 (Refer to detail View B).
2. Slide the J-Section stringer inside the fuselage aft section. Utilizing the lower right hole cut-out on bulkhead STA 205 (rudder cable hole), slide the stringer until it clears bulkhead STA 142 (Refer to detail View C, D).
3. Fit the stringer in bulkhead STA 142 and bulkhead STA 124 utilizing the cut-out on both bulkhead stations. Slide the stringer until it reaches the bulkhead STA 108 (Refer to detail View E).

4. The stringer must be placed between bulkhead STA 108 and bulkhead STA 178.
5. Once the stringer is placed in position, rivet both ends of the stringer. The stringer end on bulkhead 108 will be riveted just behind STA 108. The other end will be riveted on the bulkhead utilizing the third rivet hole from the center of the bulkhead using rivet MS20470AD3.
6. Next, rivet the joggles in bulkhead STA 124 and STA 142 using rivets MS20470AD4-4.
7. Align the stringer and drill #40 holes in the fuselage skin using the stringer holes as guides.
8. Shoot rivets in the drilled holes of the fuselage.

Center Stringer

Part Number 0512060-1

1. Remove bottom center rivet from the bulkhead STA 142.
2. Fit the center stringer in place and rivet the end located near the bulkhead STA 142 to the center of the bulkhead using rivet MS20470AD3. Align stringer and rivet the other end that is just behind bulkhead station 108.
3. Drill #40 holes utilizing the stringer holes as guides.
4. Align and Rivet the stringer in position.

Assure that all the stringers do not interfere with any control cables and other equipments installed in the aircraft.

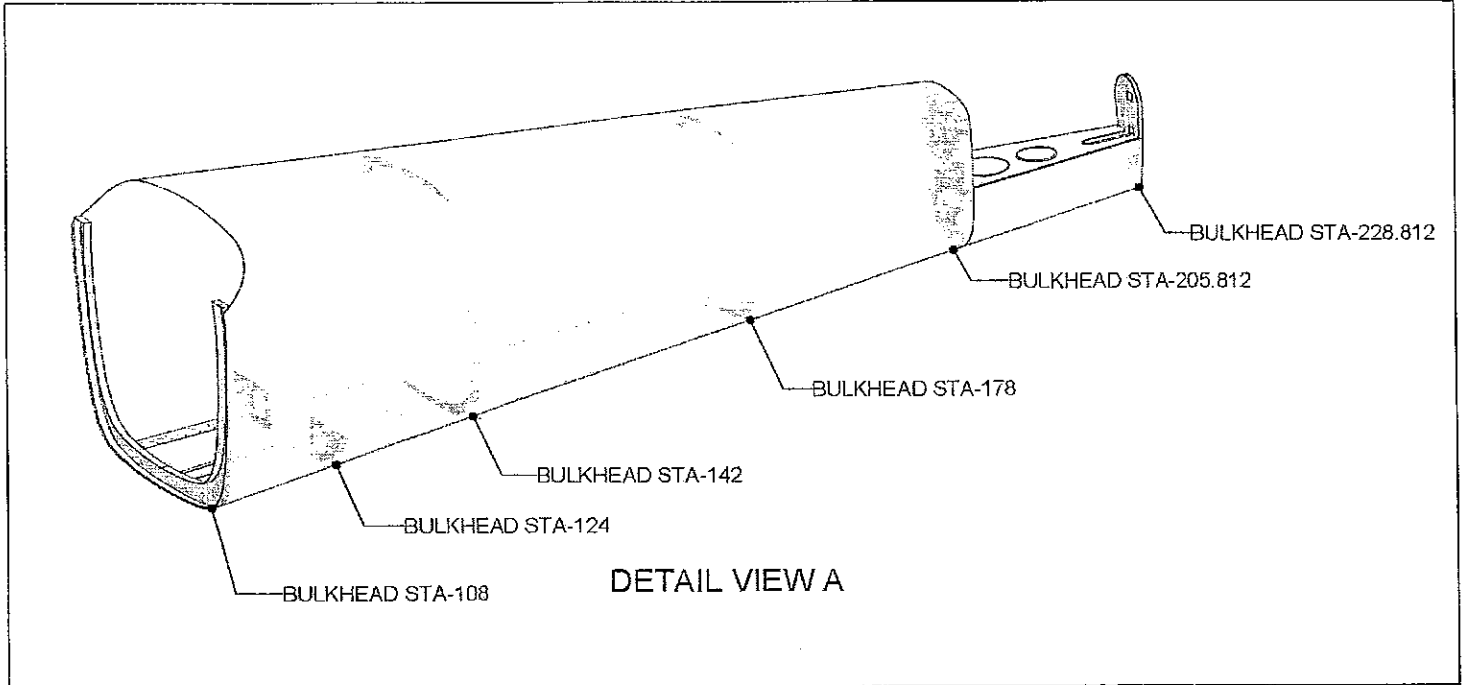


Figure 2 - Detail View A

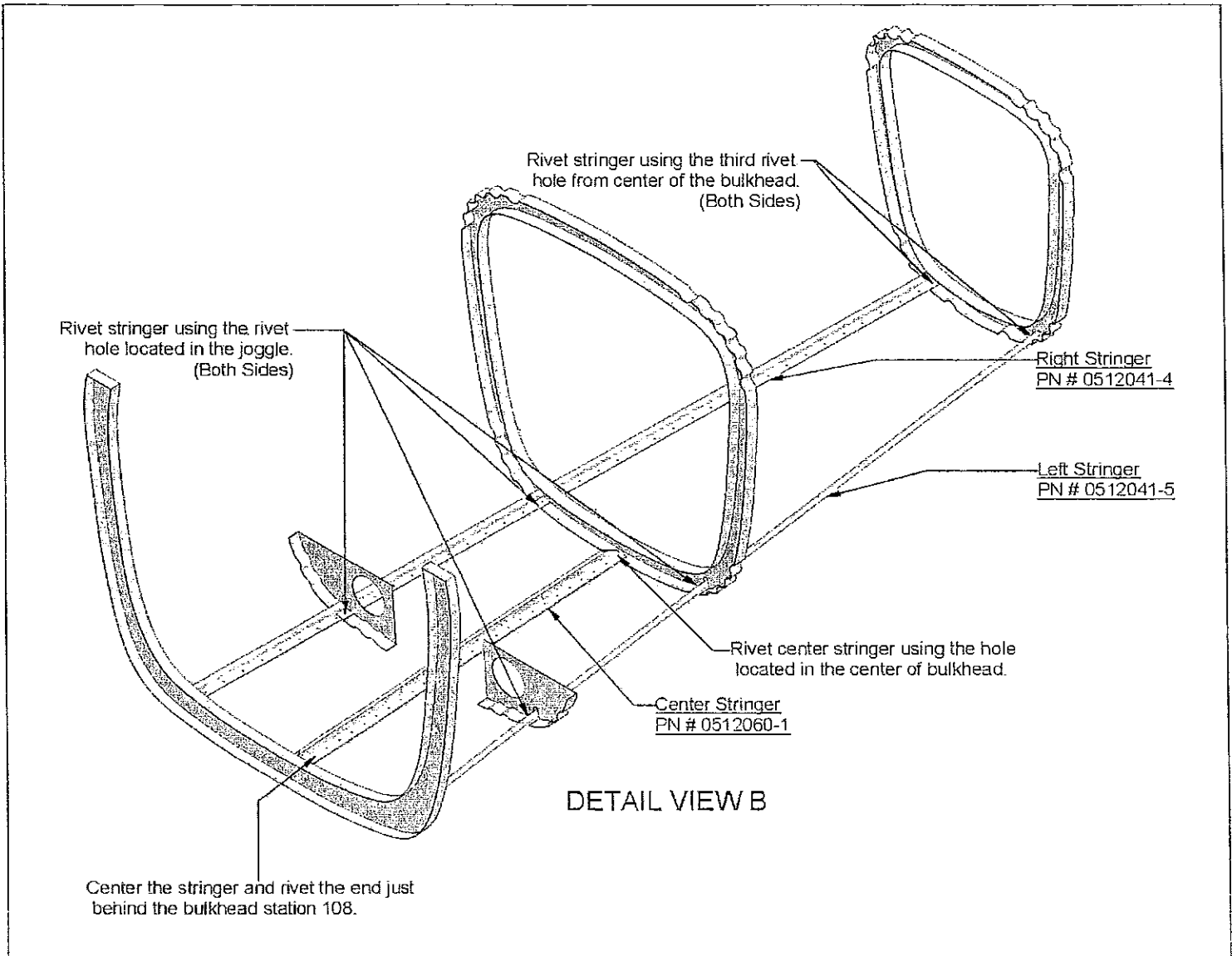


Figure 3 - Detail View B

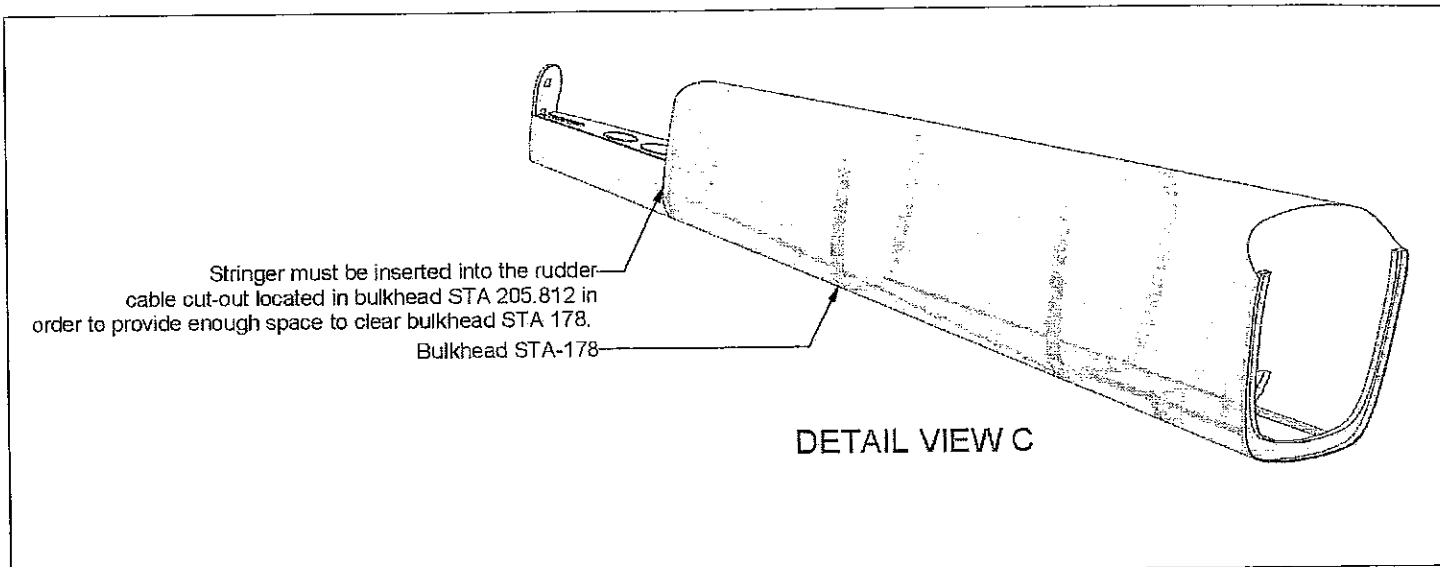


Figure 4 - Detail View C

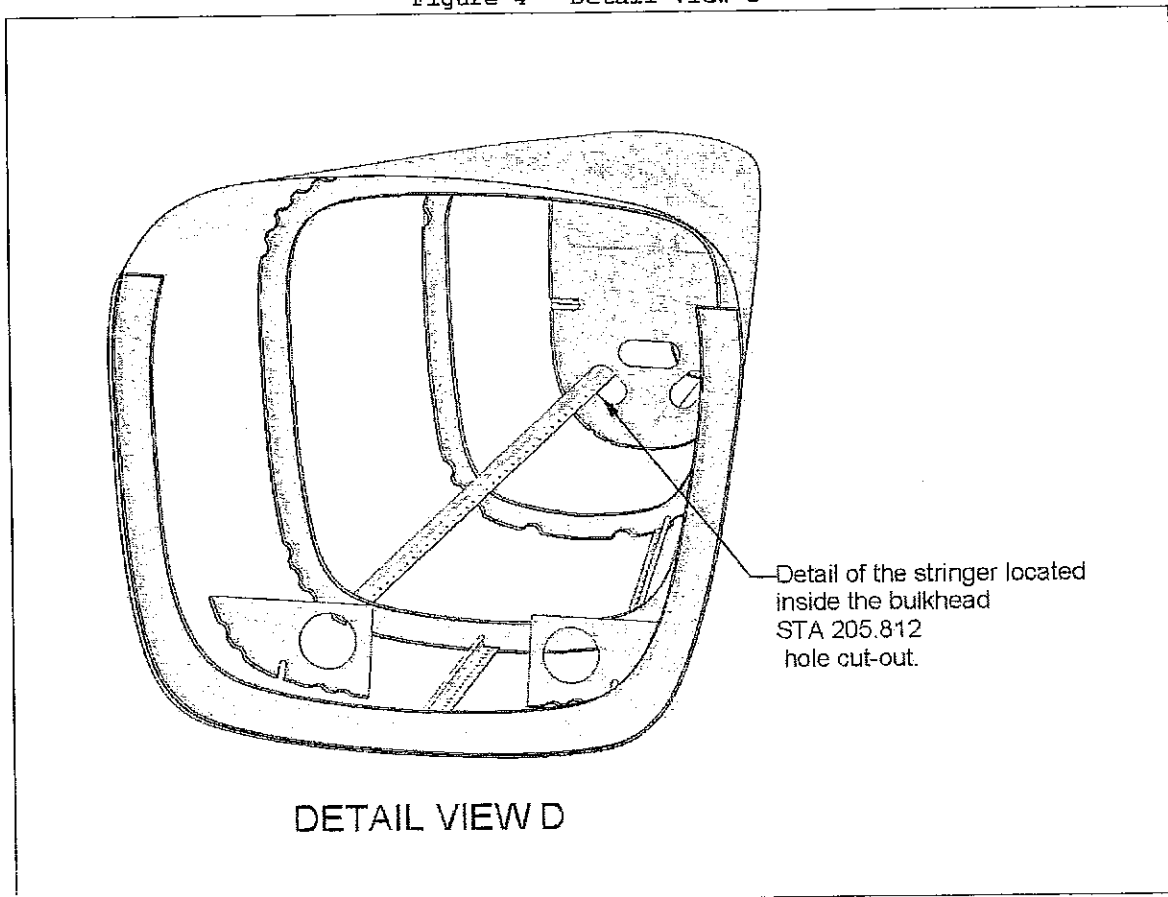


Figure 5 - Detail View D

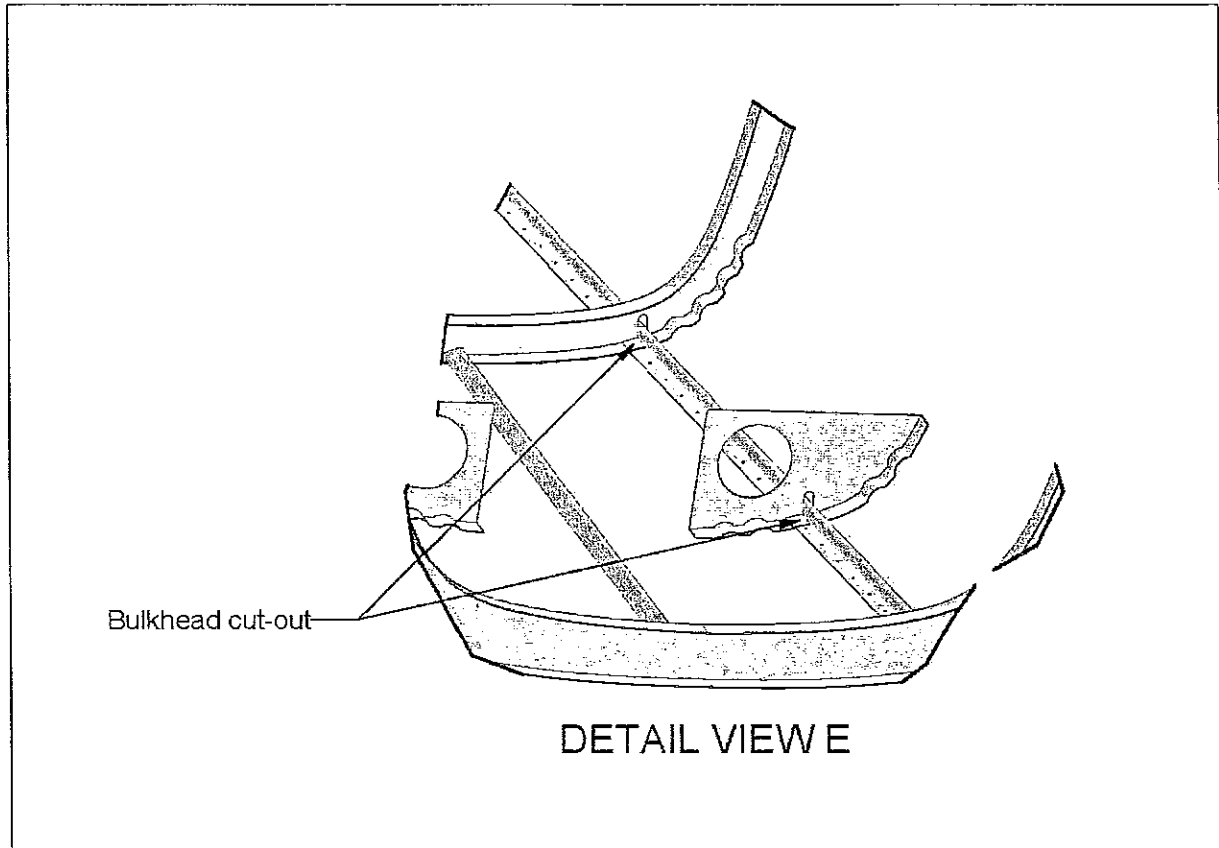


Figure 6 - Detail View E



AIRWORTHINESS LIMITATIONS

THE AIRWORTHINESS LIMITATIONS SECTION IS FAA APPROVED AND SPECIFIES MAINTENANCE REQUIRED UNDER 14 CFR §§ 43.16 AND 91.403 UNLESS AN ALTERNATIVE PROGRAM HAS BEEN FAA APPROVED.

There are no airworthiness limitations associated with this STC.